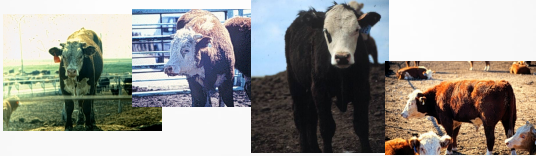


DISEASE COSTS

... how much ... how to minimize
... how to avoid

“The Devil Is In The Details”



Nebraska
10/10/10

Great Plains Veterinary Educational Center



Recognize These



Nebraska
10/10/10

Great Plains Veterinary Educational Center



Seek & Treat ... Less Than Perfect



Nebraska
10/10/10

Great Plains Veterinary Educational Center



Respiratory Diseases

- The list is long ...
 - IBR, BVD, PI3, BRSV,
 - P. multocida, M. haemolytica
 - H.somnus, Mycoplasma
- Vaccines on arrival ???
- Mass med on arrival ???
- ... Pre-arrival management !!!

Nebraska
10/10/10

Great Plains Veterinary Educational Center



Respiratory Disease In Suckling Calves & Feeder Cattle

COST MONEY

Nebraska
10/10/10

Great Plains Veterinary Educational Center



BRD—Economic Impact

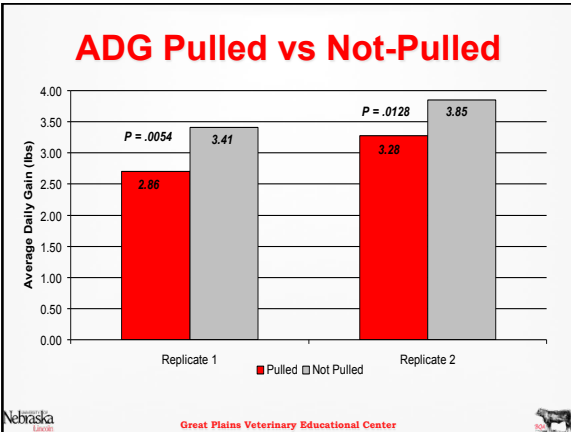
Most economically important disease in feeders

- » Prevention costs
- » Treatment costs
- » Death losses
- » Chronics
- » Decreased gain performance
- » Decreased feed conversion
- » Decreased carcass value
- » Labor costs

Nebraska
10/10/10

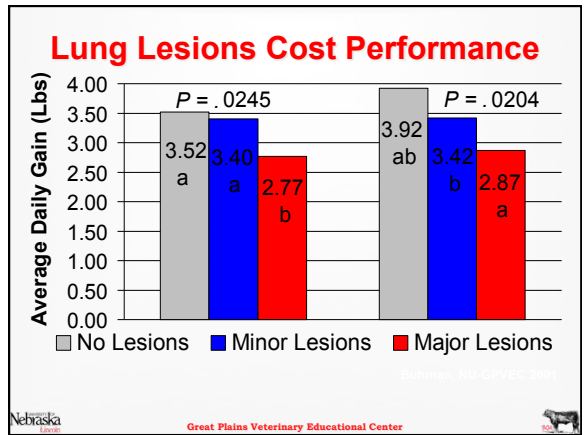
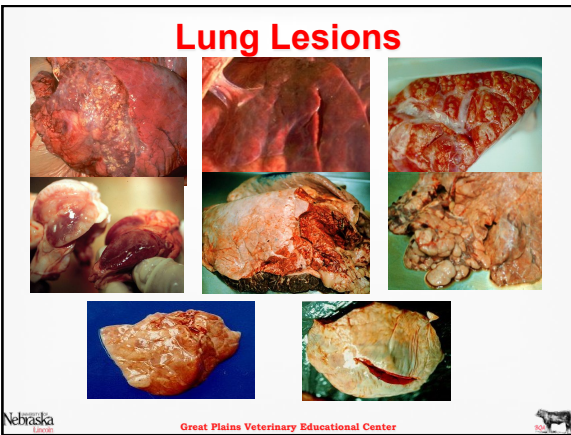
Great Plains Veterinary Educational Center





Respiratory Disease

- Cost money ...
- Cost performance ...



Data from Different Sources

Description	ADG	Marbling	Ref
No Rx vs 2 RX	- 0.37	~ - 100	Missouri
No Rx vs 2 RX	- 0.45	~ - 100	Colorado
No Rx vs 2 RX	- 0.35	- 34	JAVMA
Health vs Sick	- 0.54	- 23 / -35	Texas
Health vs Sick	- 0.46	---	Smith
Lung Lesions	- 0.34	- 11	Bryant
Lung Lesions	- 0.06	---	Bryant
Lung Active	- 0.90	- 30	Bryant
Lung All/Severe	- .06/.30	- 31 / - 78	GPVEC

Look At The Numbers

BRD → **ADG / est.FE** **Marbling**

- 0.152 / e2% **-52**
(1/2 grade)

Dealing with Disease (ex Respiratory)

Nebraska

Great Plains Veterinary Educational Center



Receiving Considerations

- Age &/or HISTORY
- Immune challenges
- Transport stress
- Weather ... +/- changes
- Design ... everything
- Handling stress
- HAVE A PLAN ... Stick to it

Nebraska

Great Plains Veterinary Educational Center

Go To



Prevention ... is key Treatment salvages only part of the loss

- Immune preparation
- Treatment timing

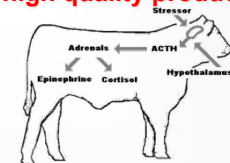
Nebraska

Great Plains Veterinary Educational Center



Select appropriate high quality products

- Most commonly, BRD has a head start in high-stressed young commingled cattle.



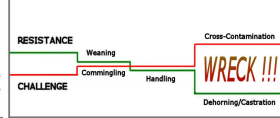
RESISTANCE VS. CHALLENGE INTERACTION

RESISTANCE



CHALLENGE

RESISTANCE VS. CHALLENGE INTERACTION



Nebraska

Great Plains Veterinary Educational Center



Select appropriate high quality products

- Mass-medication with an effective antibiotic is appropriate in high-stressed / put-together / young
- Added products that do not immediately affect the BRD outcome are not appropriate
- Antibiotics have become expensive, but selecting an ineffective antibiotic can be like “Stepping over dollar bills, while you are picking up nickels.”

Nebraska

Great Plains Veterinary Educational Center

Go To



Feeding Newly Weaned &/or Sick Calves

- Get a good nutritionist
- High quality feedstuffs
- Formulate for low intakes
- Bunk management
 - Intake is everything
 - BUT do not give up control
 - Most Nuts not like hay feeders ...
 - Feed hay in the bunk

Nebraska

Great Plains Veterinary Educational Center



Feeding New & Sick Calves

- It is a matter of details



Nebraska

Great Plains Veterinary Educational Center



Finding Sick Cattle Early ... may be an impossible job

Nebraska

Great Plains Veterinary Educational Center



Cattle are Prey Animals



- It's in their genetic heritage not to look sick
- Finding sick cattle early ... is not in our genetic heritage

Nebraska

Great Plains Veterinary Educational Center



Finding Sick Cattle

- Check to pull early everyday ...
 - Before 10AM
 - ambient temperature >70°F (21°C) or if temperatures swings >30°F (17°C)
- Ride in pairs to have someone close if needed.

Nebraska

Great Plains Veterinary Educational Center



Sick signs

D – Depression
A – Appetite
R – Respiration
T – Temperature

Nebraska

Great Plains Veterinary Educational Center



Time

- The Number One Rule:
 - ...Have plenty of time
 - Needs to be when cattle are eating
 - Early every morning ...
 - ... especially if the temperature is going to be over 80°F (27°C) that day Be finished by 10AM

Nebraska

Great Plains Veterinary Educational Center



How Sick Cattle Eat

- Pull any new calf that is slow to come to the bunk
- Look for sick cattle shortly after putting out feed.

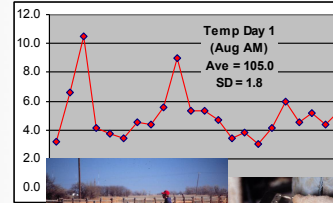


Nebraska

Great Plains Veterinary Educational Center



Don't Let A Thermometer Do Your Thinkin'



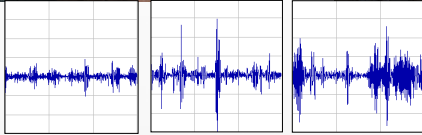
Appetite & Depression

Nebraska

Great Plains Veterinary Educational Center



Listening ...



Nebraska

Great Plains Veterinary Educational Center

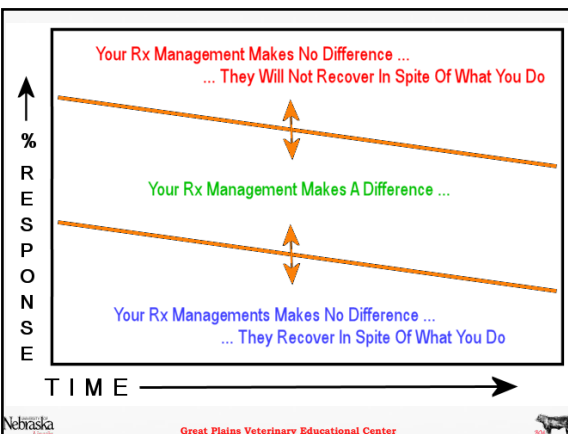


Treating sick cattle

- Follow the treatment book that outlines common diseases and the specific treatments.
- Understand how antibiotics work
- Select antibiotics that meet; ... BQA,
 - high probability diseases,
 - multiple diseases if possible
 - ... AVOID THE EXTRAS ...

Nebraska

Great Plains Veterinary Educational Center



Nebraska

Great Plains Veterinary Educational Center



why an antibiotic may seem to work on some sets of cattle and not others

- Source, Source, & Source
- **BIGGEST FACTOR ... TIMING!!!**
 - How much of a head start ???
 - Animal's ability to help fight back
 - Differences in bugs ...
 - Diagnosis ???

Nebraska

Great Plains Veterinary Educational Center



Letting go

- Giving up on a sick animal that has failed to recover is one of the toughest things we ask our treatment crew to do.
- Medications given to sick cattle that repeatedly fail to respond are extremely expensive.
- Recognizing when it is time to stop therapy is tough, but simple rules for when to stop must be developed and enforced.

Nebraska

Great Plains Veterinary Educational Center



Letting go

- Total cost of therapy may be a good guideline, but should be included with decisions based on the number of therapy days.
- Management should evaluate continue therapy on all sick cattle that fail to respond with in seven days.

Nebraska

Great Plains Veterinary Educational Center



<http://gpvec.unl.edu> Dgriffin@GPVEC.UNL.EDU

Nebraska

Great Plains Veterinary Educational Center

